

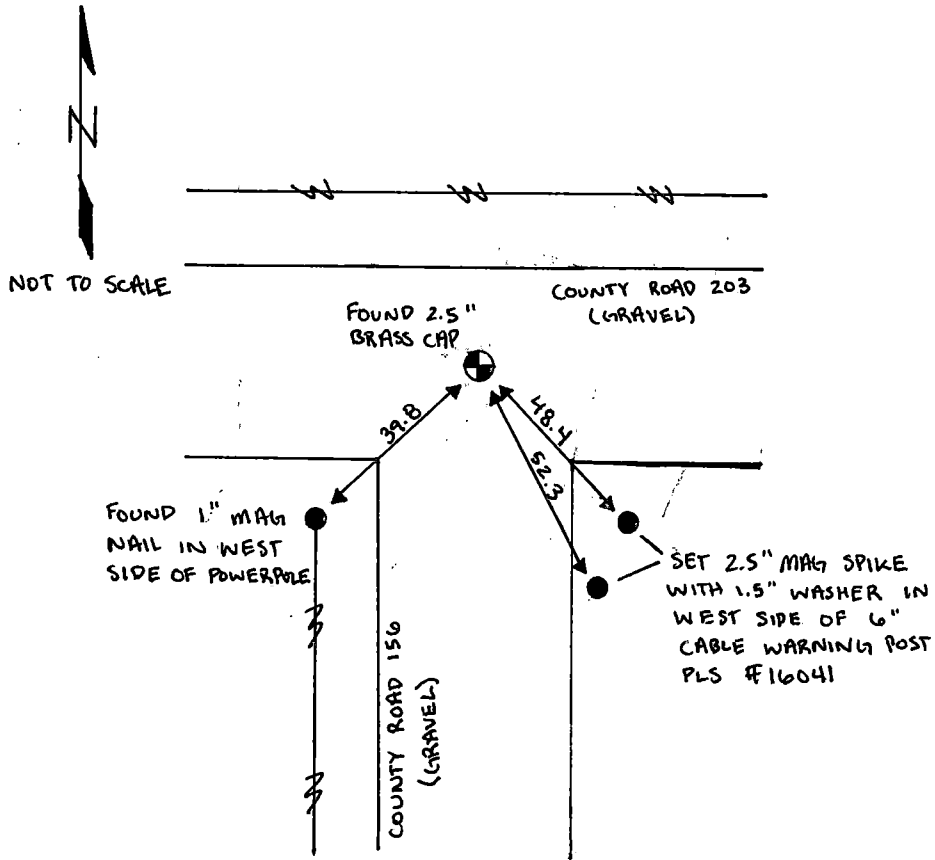
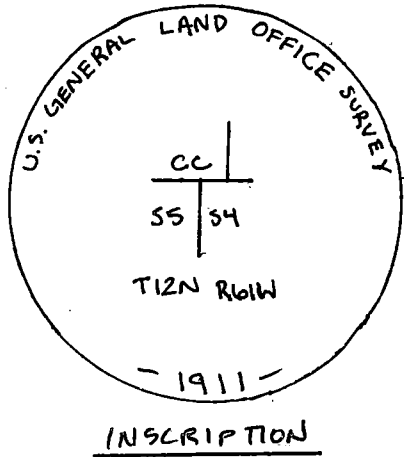
State of Wyoming Corner Record

(In compliance with the *CORNER PERPETUATION AND FILING ACT*, Wyoming Statutes, 1997, Section 33-29-140, et seq., and the Rules and Regulations of the Board of Registration for Professional Engineers and Professional Land Surveyors)

Reverse side of this form may be used if more space is needed.

Record of original survey and citation of source of historical information (if corner is lost or obliterated). Description of corner monumentation evidence found and/or monument and accessories established to perpetuate the location of this corner. Sketch of relative location of monument, accessories, and reference points with course and distance to adjacent corner(s) (if determined in this survey). Method and rationale for reestablishment of lost or obliterated corner.

SECTION CORNER: 5,4,CC, T12N, R61W, 6TH PM, LARAMIE COUNTY, WYOMING
 FOUND: 2.5" BRASS CAP SET BY G.L.O. IN 1911



Date of Field Work: June 2nd 2018 Office Reference: #61499

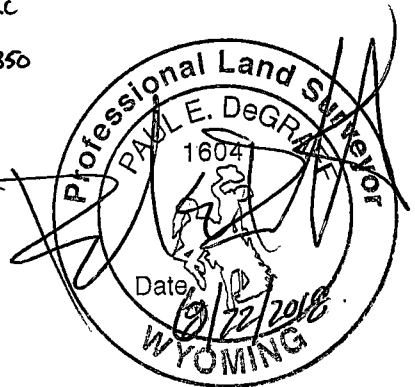
CROSS INDEX DIAGRAM

	1	2	3	4	5	6	7	8	9	10	11	12	13	14	15	16	17	18	19	20	21	22	23	24	25
A																									
B																									
C		6		5		4		3		2		1													
D																									
E																									
F																									
G		7		8		9		10		11		12													
H																									
J																									
K																									
L		18		17		16		15		14		13													
M																									
N																									
O																									
P		19		20		21		22		23		24													
Q																									
R																									
S																									
T		30		29		28		27		26		25													
U																									
V																									
W																									
X		31		32		33		34		35		36													
Y																									
Z																									
	1	2	3	4	5	6	7	8	9	10	11	12	13	14	15	16	17	18	19	20	21	22	23	24	25

Land Surveyor / Firm / Address

PAUL DEGRAFF PLS # 16041
ENCOMPASS ENERGY SERVICES, LLC
350 INTERLOCKEN BLVD SUITE 350
BROOMFIELD, CO 80021
 Telephone: 303-955-6080

This corner record was prepared by me or under my direction and supervision.
 SEAL & SIGNATURE



Corner Name: NORTHWEST SECTION CORNER Section: 4 T 12N R 61W: 6TH P.M. Cross-Index No.: A-9
 SBRPEPLS/PLSW: March 1994; PLSW January 1998



RECORDED 9/5/2018 AT 12:57 PM BK# 2595 PG# 763
 Debra K. Lee, CLERK OF LARAMIE COUNTY, WY PAGE 1 OF 1

RECP #: 738324